


AGC

AL HAYTHAM GENERAL CONTRACTING
الهيثم للمقاولات العامة

EXPLORE THE EARTH



رؤية
VISION
2030
المملكة العربية السعودية
KINGDOM OF SAUDI ARABIA



**We'll be there with you,
working for you,
every step of the way.**



Vision

To grow sustainably and become the premier and the leading company in mineral exploration, drilling, engineering and mining services in the MENA region.

To reach the superior level in exploration, drilling, engineering and mining services and to be elevated by our customers as the best business partner.

To be a leader in innovation, service and quality.

To be one of the most admired and respected companies in our industry.

Values

Unity, Professionalism, Transparency, Accuracy, Dedication and above all the Safety of our workforce.

Mission

Al-Haytham General Contracting strives to offer a full integrated exploration, drilling, engineering and mining services for the mining sector in an economical and professional manner and to develop and support every aspect of our business with the highest level of integrity remain dedicated to our clients as business partners.

Standards

We adhere with a strict standard to provide valuable services in the right time, that brings the best of our experience and knowledge so could be reflected on our clients projects.

ABOUT US

Who We Are

Al Haytham General Contracting has been established in Jeddah in 1990 (Hijri 1410).

AGC is looking forward to proactively contribute to developing Kingdom of Saudi Arabia as per Vision 2030.

AGC provides services ranging from individual consulting through complete "turnkey" operations. In other words, you can hand over your project to us, and we will take it from there.

We offer a wide range of technical services including; geology, exploration project management, samples preparation, orebody modelling and mineral resource estimations, ore reserve statements, drilling (Surface and Underground Diamond Core Drilling, Conventional Core Drilling, Reverse Circulation (RC), Air Core Drilling, Rotary Drilling, Grade Control Drilling & Geotechnical Drilling), land use surveying, roads design and construction for mines and quarries, geotechnical investigations, quarry/mine designs and production planning, drill and blast, quarry/mine management, and crushing and screening. We have the fleet and the workforce with essential technical and managerial expertise.

We dedicate our services to add value to your project through robust mineral science applications, smart management and good leadership. We are targeting clients ranging from private investors to major companies.



Health, Safety & Environment Policy

Al Haytham General Contracting is a safely conscious mining contracting entity committed to maintaining the highest standards of HS&E in the industry in order to eliminate conditions and incidents that could result in personal injury, ill health or damage to the environment.

AGC believes that the health and safety of its employees is of prime importance to the success of its operations. The company is committed to conduct its operations in a safe and productive manner that will not hurt people or endanger their life.

AGC will comply with all appropriate laws and regulations related to occupational health and safety in all areas of its business activities. In line with this commitment, we will ensure compliance with proper work practices as determined by our safety management systems, which are integral to the company operational procedures.

AGC is committed to implementing well-designed, well-managed, and well-regulated exploration and mining operations to maintain a consistent balance between our environmental and economic responsibilities. By proactively monitoring and managing the potential environmental impacts of exploration and mining activities, those impacts can often be mitigated or eliminated throughout the entire operation, from exploration to production to eventual shut down and closure.

To ensure a very high standard of safety and health is maintained, AGC is committed to the following:

- *All equipment shall be maintained in a safe operating condition.*
- *All workers and others shall be physically and mentally fit for work at all times.*
- *All accidents / incidents and near misses shall be reported and investigated.*
- *Provide information to employees on potential hazards in the workplace.*
- *All employees shall follow nominated safe working procedures.*
- *All employees shall wear required protective clothing.*
- *All employees shall care for the safety and health of fellow employees.*
- *The hierarchy of hazard control shall be applied to risk management at all times.*
- *Smoking is not permitted in working environments unless otherwise designated.*
- *Standard Work Procedures shall be developed, implemented and regularly reviewed.*
- *Ongoing training shall be provided for all workers.*
- *Be committed to minimizing its impact on the environment at all its working sites.*



Healthy, Safety & Environment





Quality Policy

Al Haytham General Contracting is a specialist contractor providing mining and exploration services to the Saudi mining industry. Our activities demand that specific emphasis is placed on safety, quality performance and reliability to exceed our client's expectations.

AGC and its management recognize that commitment to consistent high quality service and continual improvement throughout its business operations is crucial in meeting its objectives of:

- *Ensuring that customers' requirements are identified and met.*
- *Seeking to recruit, develop and retain outstanding employees.*
- *Empowering all employees to be responsible and accountable for quality of their work.*
- *Developing and maintaining mutual beneficial partnerships with clients, contractors and suppliers.*
- *Continually training its employees at all levels to enhance personal development and improve customer satisfaction.*

Quality management will be achieved through:

- *Commitment to industry best practice and soundly managed risk-based safety and productivity management systems.*
- *Implementation of the operation and control processes through approved documented policies, standards, procedures, templates and guidelines by all Al Haytham for Contracting Company personnel.*
- *Measurement, analysis and continual improvement of all aspects of the business operations.*
- *Focus on customer satisfaction by monitoring and analyzing information to determine if customer requirements have been met or exceeded.*
- *All employees' personnel commitment to providing a quality service the first time, every time in the pursuit of professional excellence.*

MINERAL EXPLORATION



MINERAL EXPLORATION



We offer a wide range of exploration services, reflecting our broad geological interests and the diverse expertise of our team. In general, we get involved with projects from grassroots exploration through to the pre-feasibility stage, and these can range from a simple property evaluation and technical report preparation to running and managing entire exploration programs, depending on the client's needs.

AGC's team has proven expertise in a wide variety of geological settings and deposit types. We always adhere to current best practices in health and safety and environmental management, while ensuring that all exploration work is undertaken and completed in compliance with international standards.



Our Mineral Exploration Services

Geology

Samples Preparation

Orebody Modelling and Mineral Resource
and Mineral Reserve Estimation

Mineral Exploration Project Management

MINERAL EXPLORATION

Geology

Geology

AGC provides comprehensive geological services to many sectors in Kingdom of Saudi Arabia. We deliver both in-field and desktop services to a diverse range of clients who are interested in mineral exploration and mining.

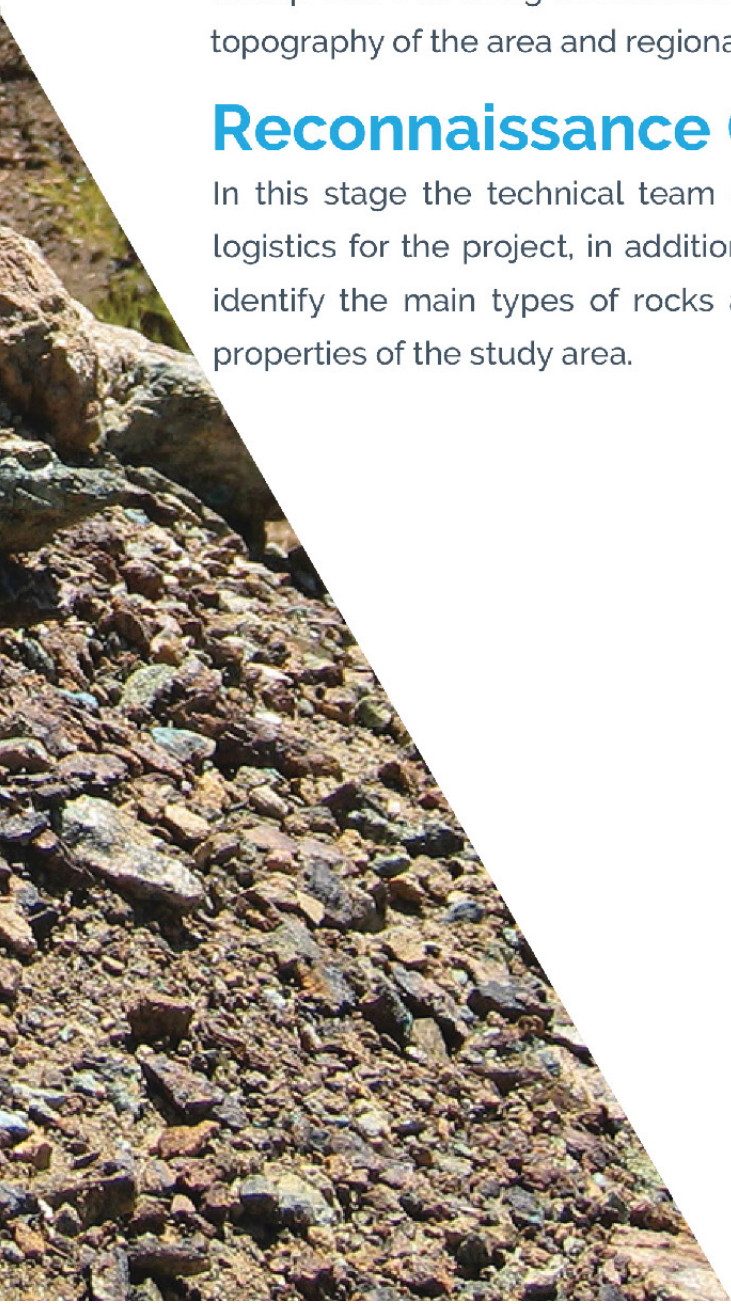
The understanding of the sub-surface geology should always be a key priority and should be supported by good data, whatever the nature of your project. At AGC we have the technical "know-how" and the experience to progress a geological project through all of the required stages.

Desk Studies

Geological desk studies is the cornerstone on which to start exploration work, including viewing all available geological "regional, local and detailed" studies, every publication in scientific journals, scientific research institutions and industrial enterprises with using the satellite images to identify the nature of the rocks and the topography of the area and regional structural geology.

Reconnaissance Geological Studies

In this stage the technical team carries out field visits to check the availability of logistics for the project, in addition to recording the geological field observations to identify the main types of rocks and geological structures and general geological properties of the study area.



Surface Geological Exploration Studies

Lithostratigraphic Studies

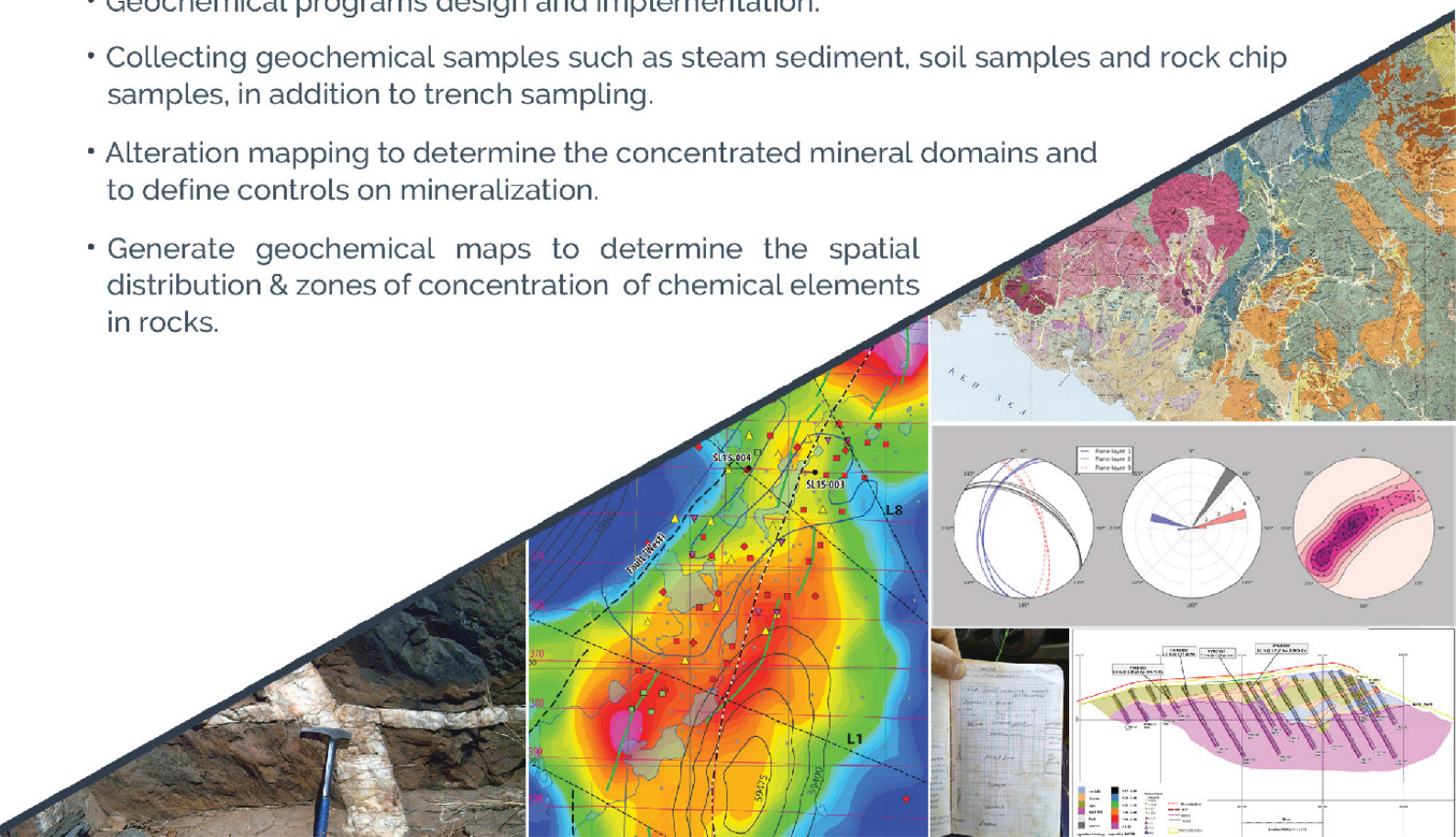
- Detailed description of rock exposures to identify the time of deposition and depositional environment of sedimentary deposits.
- Collecting rock samples to perform petrographic and ore-microscopy studies.
- Geological Mapping to define lithology, stratigraphy and nature of contacts between different rock units.

Structural Studies

- Carry out the geological structures measurements of ' Faults-Folds – Fractures...etc. ' strike, dip, lineation, foliation, fold plunge and facing, fault displacement, direction and offset value resulting from the movement.
- Define the structural relationship between rock units.
- Plotting the structural maps using Encom Discover and MapInfo Software.
- Statistical analysis of structural data using stereographic projection of Stereonet program.
- Identify the structural controls associated with the mineralization

Geochemical Studies

- Geochemical programs design and implementation.
- Collecting geochemical samples such as steam sediment, soil samples and rock chip samples, in addition to trench sampling.
- Alteration mapping to determine the concentrated mineral domains and to define controls on mineralization.
- Generate geochemical maps to determine the spatial distribution & zones of concentration of chemical elements in rocks.



Exploration Studies for Drilling Programs

- Core/RC geological logging and core structural and geotechnical logging in compliance with international industry standards.
- Capturing and analyzing core samples photography.
- Storing, managing and validating all drilling data (eg. collars, downhole survey, core orientation, geological, structural and geotechnical logging, photography, assay results and specific gravity measurements).
- Generation of drillhole logs.
- Interpretation of multiple datasets in an integrated 2-Dimensional environment using Encom Discover MapInfo Software.
- Generation of Isopach maps to determine the thickness of the subsurface layers.
- Generation of Isopleth (Grade) maps to determine the chemical properties distribution of the subsurface layers.

Samples Preparation

Sample preparation is a vital stage in the analytical process. Correct preparation procedures allow representative sub-sampling which is the foundation of quality analysis. The selection of the specific sample preparation procedures will depend on the type and size of the sample and the mineralogy as well.

AGC is capable of carrying out samples preparation (drying, crushing, splitting, pulverizing and packing). We have all the equipment and workforce necessary to carry out this mission successfully.

Our samples preparation facility is equipped with the following:

- Ovens
- Rocklabs Boyd Standard Crushers
- Riffle Splitters
- FLSmidth LM2 Pulverizing Mills
- Normal and Digital scale
- Sieves



Orebody Modelling and Mineral Resource and Mineral Reserve Estimation

Cost effective field exploration requires thinking in a three dimensional framework (3D Modelling), as ore deposits are characterized by inherently 3D geological processes.

Our modelling workflow enables the integration of multiple 3D and 2D datasets, and the real-time, rapid evaluation of exploration targets. These tools and our experience allows for rapid and seamless incorporation of results into resource and reserve estimations, mine planning and exploration targeting.

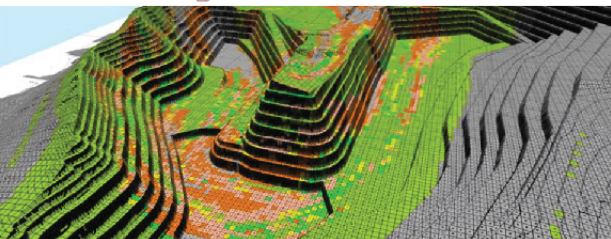
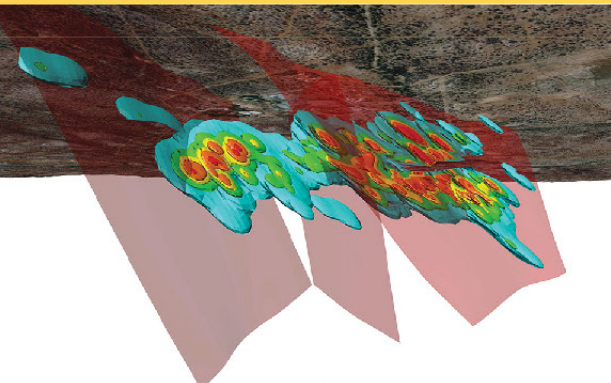
A mineral resource estimate carries out to international best practice is vital for evaluating a deposit with confidence and planning the development of a mine. We follow the principles of competency, transparency and materiality in preparing technical reports of mineral resource and reserve estimates, all is done in compliance with international industry standards.

Drawing on knowledge gained from exploration projects, development projects and operating mine sites, we develop or audit geological models and resource estimations for all major commodities and deposit types for inclusion in almost all levels of study. We use a variety of tools including Geovia Surpac and Encom Discover.

Our services include:

- Appraisal of data collection techniques
- Optimizations of drillhole targeting for resource definition
- Mineral resources and reserves estimation, geostatistical and spatial analysis.
- Density measurements
- Mineral Resources and Mineral Reserves Classification
- Conditional Simulation Studies "Risk Analysis"

Project Management



Our specialties in mine development, planning and project management can extend the life of a mine, using the latest techniques and specialized equipment, and also provides more profitable approaches to mining projects, new ways to overcome problems and ensuring optimal equipment utilization with safety as a priority.

We provide Full implementation and management of exploration programs, including:

- Project design and budgeting
- GIS and remote sensing
- Regional geological studies
- Advice on mineral targeting
- Geological, structural, alteration and regolith mapping
- Geochemical Sampling (such as soil, stream sediments and rock chips) and Trenching programs
- Mineralogical and ore microscopy studies
- Drilling project planning, design and implementation
- Core/RC geological logging and core structural and geotechnical logging in compliance with international industry standards
- Capturing and analyzing core samples photography
- Core/RC sampling and samples preparation
- QA/QC design, implementation and reporting
- Specific gravity measurements
- Assay contracting and management
- Storing, managing and validating all project data
- Geological data analysis through 3D orebody modelling and resource and reserve estimation in compliance with international industry standards
- Technical Report writing and review in compliance with international industry standards

DRILLING



DRILLING



We Provide Professional Service in the Most Demanding Environment

We can plan, design, supervise, manage and implement drilling projects, in all locations and under any circumstances.

As a full-service company, we specialize in drilling operations for exploration, geotechnical, development and production drilling. Our drilling capabilities include surface and underground wireline diamond coring drilling; conventional core drilling; reverse circulation drilling (RC); air core drilling, air/mud rotary drilling; grade control drilling and geotechnical drilling as well as a full suite of support activities needed for a successful operation. We see ourselves as an extension of our client's business and aim to work with them to achieve their business needs.

We have the financial resources and expertise to deliver on any size project, from delivering rigs to suit your specific needs, to ramping up quickly to meet a tight deadline. AGC is capable of getting the job done safely, efficiently, on time, and on budget.

We have high quality rigs and experienced crews. Using sophisticated drilling software and instruments coupled with our expertise, we strive to not only meet but exceed our clients' requirements.

AGC ensures that whatever your needs and wherever your site is located, the drilling won't stop.

Our Drilling Services

Surface and Underground
Diamond / Wireline Core Drilling
Conventional Core Drilling
Reverse Circulation Drilling (RC)
Air Core Drilling
Air and Mud Rotary Drilling
Grade Control Drilling
Geotechnical Drilling





DRILLING

Diamond / Wireline Core Drilling

We use highly mobile surface core drill rigs configured as truck and track mounted. We offer a complete suite of diamond drilling services and using the most productive, technologically advanced equipment available in the industry globally. Our diamond drilling fleet enables all standard core sizes and able to reach to depths up to 2,450 metres using NQ, 1600 metres using HQ and 1055 metres using PQ.

We have experience drilling in various deposits for different metals and minerals. Our track record of safely hitting targets, recovering perfect samples and adapting to clients specific needs while adhering to planned budgets are the main reasons so many companies are using AGC.

Core Barrel Diameter (mm)	Maximum Depth (m)
131	50
116	80
101	100
86	120
76	150

Conventional Core Drilling

We are capable of drilling in soft and hard rocks using conventional technique for shallow depth drillholes with inclination angles ranging from the vertical (-90) to (-45) degrees

This technique is ideal for shallow drillholes in sedimentary deposits as it saves time and cost

Reverse Circulation Drilling (RC)

We use highly mobile RC drill rigs configured as truck and track mounted. Our RC drilling fleet enables diameters ranging between 140mm and 152mm and able to reach to depths up to 200 metres in vertical drillholes and 150 metres in inclined drillholes.

Air Core Drilling

We are capable of drilling to depths up to 200m in vertical (-90) drillholes, and can reach to up to 150m in (-45) degrees inclined drillholes. Diameters range between 140mm and 152mm.

Air and Mud Rotary Drilling

We are capable of drilling using tri cones (rotary system) with a maximum diameter of 6 inches, maximum depth that can be reached is 150 meters. This technique is ideal for shallow drillholes in sedimentary deposits as it saves time and cost.

Grade Control Drilling

We approach grade control with quality outcomes in mind. Splitting systems are setup to meet client and ore body requirements.

Using reverse circulation drilling techniques and advanced sample splitting and recovery systems our grade control drills can provide samples helpful to differentiate ore and waste rock maximizing the profitability of our clients mining operations.

Geotechnical Drilling (HQ3/NQ3)

Geotechnical drilling programs can be offered in both NQ3 and HQ3 sizes using our Diamond/Wireline Core Drilling Rigs. Samples are recovered from the bottom of the hole using a split barrel sleeve that keeps the core intact.



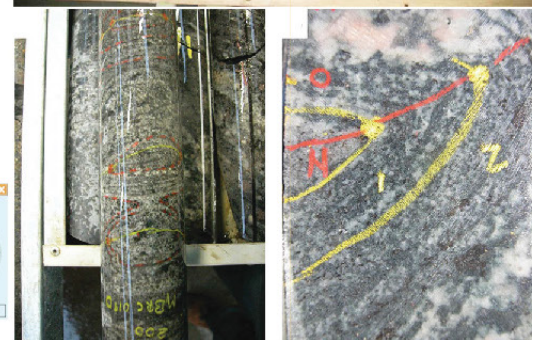
DRILLING

In addition to the drilling operations, AGC provides a full suite of support activities needed for a successful operation, including:

- Surveying ground control points and drill collar locations using Total Station or GNSS and RTK.
- Downhole Survey using in-house Reflex EZ-TRAC device.
- Core Orientation using in-house Devico BBT device (HQ and NQ sizes) and Reflex ACT II RD and ACT III RD
- Core/RC geological logging and core structural and geotechnical logging in compliance with international standards
- Core cutting using ALMONTE Automatic cutting saw.
- Specific gravity measurements.
- Sampling, samples preparation, packing and numbering.



The rock core is orientated at the surface when the two arrows are aligned.



ENGINEERING



ENGINEERING



We provide land survey, mine and quarry roads design and construction and geotechnical investigation services as part of our engineering department.

Our land survey services include topographical survey, boundary and setting out survey, roads survey and cut & fill calculations, quantity survey and mine/quarry survey.

Our mine and quarry roads design and construction services include survey activities, roads design, grading and resurfacing, infrastructure constructions, bulk cut & fill, compacting, laboratory testing, concrete and asphalt paving and roads marking.

Our geotechnical investigations include the entire spectrum of geotechnical engineering capability, from desk study through ground investigation design and supervision, factual reporting, geotechnical interpretation, foundation and stability analysis and design. Areas of study include open pit and quarry design, doil, rock and waste dump slope stability, plant site and foundations investigations, underground Infrastructure design (tunnels, subways and underground facilities that are used in subways, underground highways, waterways and waste storage), foundations design (bridges, towers, buildings, roads, highways, railroads and other structures), pile foundation design, geotechnical/geological hazard and terrain analysis, landslide and slope stability studies, engineering for dams and engineering for soft ground

Our Engineering Services

Land Survey

Mine and Quarry Roads Design
and Construction

Geotechnical Investigation



Land Survey

All land survey services are conducted by our qualified and professional surveyors using our instrumentation and software inventory.

At AGC, we realize and fully understand the importance of survey data we deliver to our clients which is a vital input data into the project design and planning phases. High quality survey data in terms of accuracy and completeness is guaranteed via faultless and well defined process of clearly identifying project objectives, professionally supervised field survey and mapping procedures, and more importantly, well established quality control and assurance processes throughout the entire project.

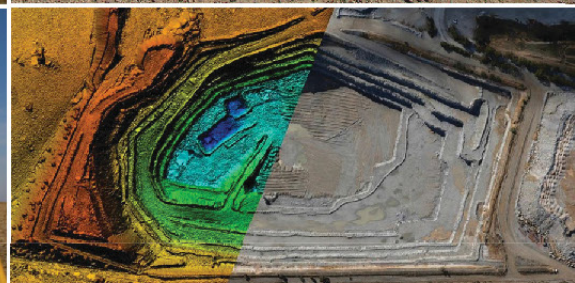
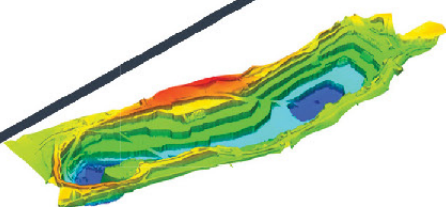
All our deliverables are painstakingly tested and checked in accordance with highest professional standards.

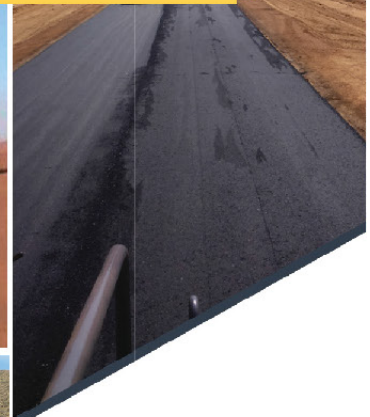
Our land survey services include:

- Topographical Survey
- Boundary and Setting out Survey
- Roads Survey and Cut and Fill Calculations
- Quantity Survey (Stockpile measurements)
- Mine/Quarry Survey

Our instruments:

- Topcon Total Station
- Leica Geosystems GNSS and RTK





Mine & Quarry Roads Design and Construction

The construction of a new road – whether from asphalt or concrete – requires the production of an excellently bonded pavement structure, beginning with a stable base layer and going all the way to a precisely leveled surface course.

Depending on the type of application being considered, AGC has a standard method in laying the course for formation, sub-base, Road-base & Asphalt; to provide a long term structural performance such as strength and/or stiffness, and volume stability.

We successfully completed roads for mines and quarries accross Kingdom of Saudi Arabia. Our highly trained team will execute your project with the professionalism and efficiency that comes with years of experience.

Our suit of road construction capabilities include:

- Roads survey activities
- Roads design
- Roads construction:

Grading and resurfacing
Infrastructure constructions
Bulk Cut & Fill
Final trim and compact

Laboratory tests
Concrete paving
Asphalt paving
Marking (signs, sign boards and lighting)

Geotechnical Investigation

AGC provides the entire spectrum of geotechnical engineering capability, from desk study through ground investigation design and supervision, factual reporting, geotechnical interpretation, foundation and stability analysis and design.

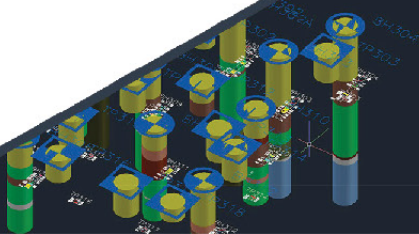
For a new site, we undertake a geological and structural review followed by a target drilling program to characterize the site's geotechnical conditions. These programs include both geotechnical, structural and hydrogeological data collection activities.

For existing operations we supply the drilling program by mapping the existing excavations and back-analyzing the geotechnical parameters of existing excavations.

At AGC, our geotechnical drilling services provide you with representative samples, supplying the accurate subsurface profile so you can make the appropriate design and engineering decisions.

Phases start from scoping level studies, through pre-feasibility study to feasibility studies, including the following areas of study:

- Underground Infrastructure design (tunnels, subways and underground facilities that are used in subways, underground highways, waterways and waste storage)
- Foundations design (bridges, towers, buildings, roads, highways, railroads and other structures)
- Pile foundation design; full scale static and dynamic load testing
- Geotechnical/geological hazard and terrain analysis
- Open pit and quarry design
- Soil, rock and waste dump slope stability
- Plant site and foundations investigations
- Landslide and slope stability studies
- Engineering for dams
- Engineering for soft ground





Geotechnical Investigation

ENGINEERING

Our geotechnical drilling services include:

- Hollow stem auger
- Cable percussion drilling
- Air Rotary drilling
- Conventional core drilling
- Wireline/Diamond drilling (BQ, NQ, HQ & PQ coring and Triple tube coring)

Our In-situ tests include:

- Standard penetration test (SPT)
- Vane shear test (VST)
- Borehole shear test (BST)
- Dynamic cone penetrometer (DCP)
- Pressuremeter test (PMT)
- Dilatometer test (DMT)
- Cone Penetration Test (CPT)
- Pocket penetrometer test (PP)
- Water pressure (Packer) test (WPT)
- Plate loading test (PLT)
- Undisturbed sampling (Shelby tube)
- Cavity probing (Cross-hole seismic test)
- Geophysical borehole logging

Field tests include:

- Electric Resistivity test (ERT)
- Thermal Conductivity test (TRT)
- California bearing ratio test (CBR)

We also provide laboratory tests for soil and core samples in certified laboratories as well as chemical analysis for water samples.

MINING

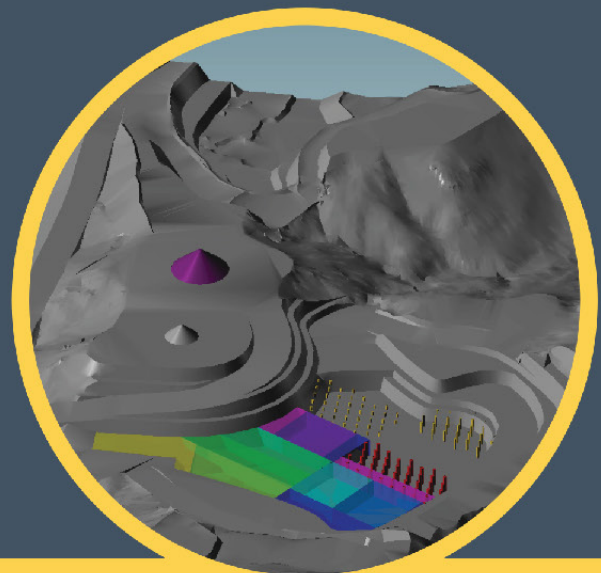


MINING



We offer a full range of comprehensive and reliable mining services to our clients essential to enhancing new mining developments and existing mines.

Our goal is to give the client the highest confidence in the underlying value of his mining project, by providing appropriate analyses and interpretations to support his key project decisions and development strategies.



Our Mining Services

Mine Design and Planning

Drill and Blast

Technical and Operational
Mine and Quarry Management



MINING

Mine Design and Planning

Mine Design and Planning

Mine planning is an absolute requirement of world's best mining practice. Mine planning is an essential component of efficient integrated mining operations, which provides the road map to optimum production outputs and thus maximizes cost efficiency and performance.

AGC has expertise in producing detailed mine designs and production plans to drive sound investment decisions for your potential mining projects and active mines.

Our range of in-house technical services enables us to provide fully integrated mine and quarry design services that take into account key factors including the geological nature of the resource and development costs. We use a variety of tools including Geovia Surpac and MineSched.

Our mine design and planning services include:

Mine/Quarry design

Mine/Quarry access and services designs.

Stockpiles and waste dumps designs.

Drill and blast design.

Waste/ore definition.

Determination of fleet requirements.

Mine/Quarry opening details and developments.

Detailed mine production plans and scheduling.

Complete long-term & short-term mining plans.

Detailed shift-by-shift scheduling of all activities.

3D visualization models

Capital and operating cost estimates

Drill and Blast



AGC is able to provide a quality drill and blast service for any surface mining operations on any scale, at any location across our field of operations in Kingdom of Saudi Arabia.

Our drill and blast team includes well-experienced and certified blasting engineers with approved Saudi license.

Our drill and blast services include:

- Drilling pattern design
- Blasting circuit design
- Supplying authorized Shot - Firer
- Blast monitoring reports
- Obtain blasting permits for projects
- Supply explosives and detonators to blasting sites

Technical and Operational Mine and Quarry Management



Our specialties in mine development, planning and project management can extend the life of a mine, using the latest techniques and specialized equipment, and also provides more profitable approaches to mining projects, new ways to overcome problems and ensuring optimal equipment utilization with safety as a priority.

We are able to provide total mine management services, We are capable of:

- Initiating and implementing mine/quarry designs and production plans.
- Providing your site with all required equipment for short or long-term.
- Optimizing operational equipment.
- Initiating drill and blast designs.
- Drill and blast implementation.
- Initiating and implementing grade control drilling and reconciliation.
- Providing on-site technical personnel required for short or long-term vacancy periods across technical and operational roles at senior and junior levels.

CRUSHING & SCREENING



CRUSHING & SCREENING



AGC can supply key contract crushing and screening services for mines, quarries, cement plants, gold plants and other extractive operators for different raw materials including limestone, dolomite, phosphate, granite, etc.

We offer all the main types of crushing, for primary, secondary, tertiary and fine grinding applications in the quarrying, mining and recycling industries.

We offer a wide range of crushers and screens comprises a variety of types and brands for contract crushing purposes: jaw crushers, cone crushers, impact and VSI crushers. These can also be fitted with a wide range of screen media including Inclined, Horizontal and Multi-Slope for a wide range of applications, to suit your individual needs. Screens can be washing or dry, depending on your application. Crushing production can reach to up to 2000 ton/hr.

Depending on the job at hand and the specific outputs, AGC has the capacity and capability to offer crushing and screening services that satisfy just about any scope of works in any location across Saudi Arabia.

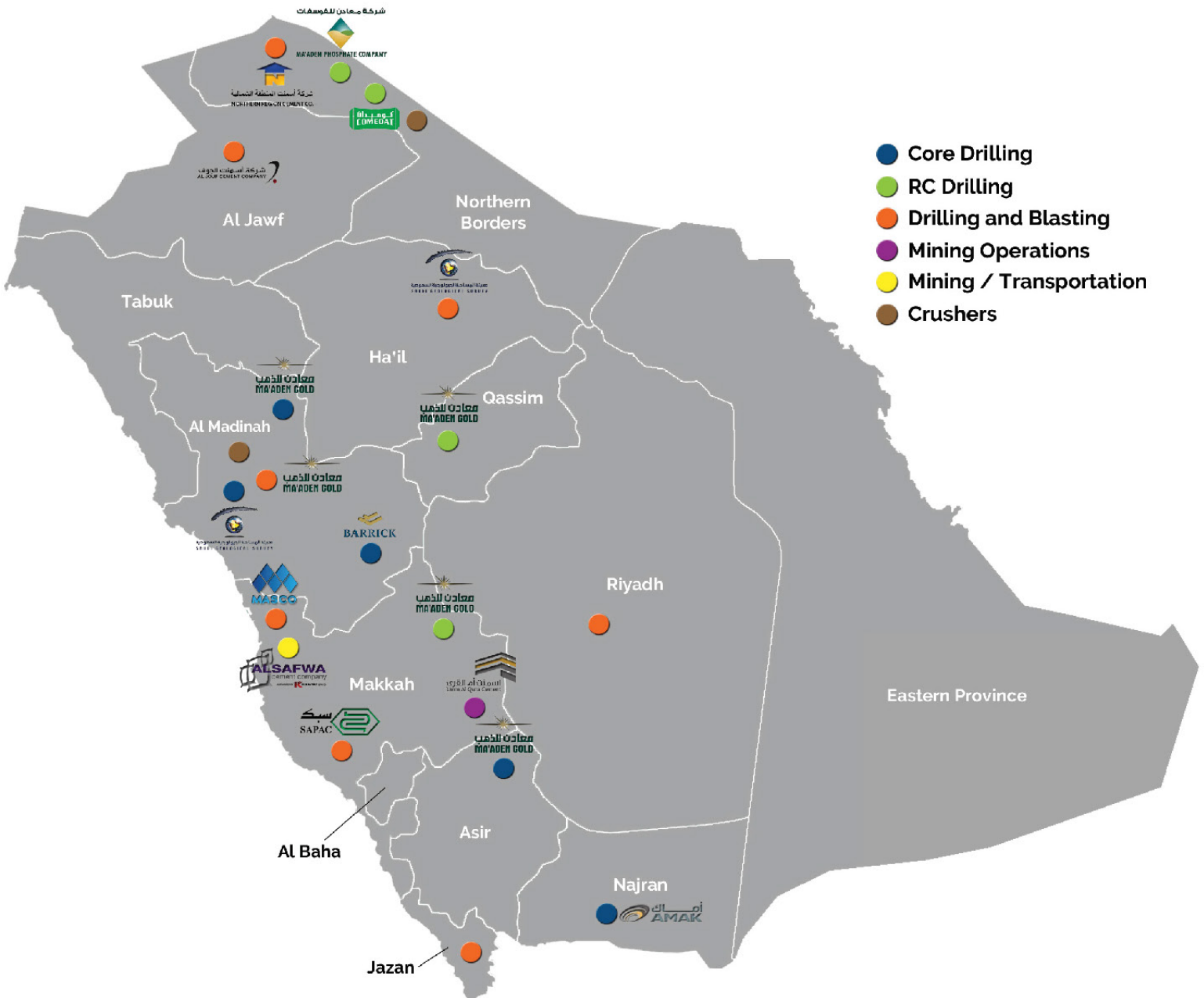
Our field-proven rock crushing solutions will give you years of dependable and profitable service.



Our Projects

Project Name	Location	Client	Scope of Work	Status
18-HQ-036 Exploration 2018	Al Hajar	MAADEN	Exporation HQ Drilling - 5800m	In Progress
18-HQ-047 -Exploration-2018	Turaif	MAADEN	RC Drilling - 20,000m	In Progress
MBCC-JS-MIN-003-18	Jabal Sayed	Maaden Barrick Copper Co.	Diamond Core Drilling - 2000m	In Progress
Blasting Project	Al Jalamid	MAADEN	Blasting services with transportation	In Progress
91703391 ASQ Drilling Support Ser.	As Souq	MAADEN	Geological Support Services	In Progress
Blasting Service	Turaif	NRCC	Blasting Services	In Progress
91801668 Drilling & Blasting	Bulghah	MAADEN	Drilling & Blasting Services	In Progress
Umm Al Qura Cement	Taif	UACC	Mining Operation & Rental Services	In Progress
SAFWA	Rabigh	SAFWA Cement	Rental Operation	In Progress
Drilling & Blasting	Jeddah	Mubasher	Drilling & Blasting Services	In Progress
Land Blasting	Jeddah	Thiniyah	Land Blasting Services	In Progress
17-HQ-031 Drilling Services	Assouq	MAADEN	RC Drilling	Completed
Sinkhole Mapping	Al Jalamid	MAADEN	Mapping of sinkhole-Mining Area of Jalamid	Completed
CNNC	Jabal Sayid	BRIUG	Exporation HQ Drilling	Completed
Al Swailem Quarries	Jeddah	MASCO	Drilling & Blasting Services	Completed
Drilling & Blasting	Jeddah	GAC	Drilling & Blasting Services	Completed
Drilling & Blasting	Jeddah	EMSCO	Drilling & Blasting Services	Completed
Al Swailem Quarries	Makkah	MASCO	Drilling & Blasting Services	Completed
Water Project	Hail	Directorate General of water	Drilling, Punching & Blasting	Completed
91800159 ASQ Core Cutting	As Souq	MAADEN	Core Cutting - 1500m	Completed
Crusher Project	Jeddah	NESMA	Feeding Crusher	Completed
Al Alfia Project	Jeddah	General Agencies & Contracting Co.	Earthworks & Infrastructure works	Completed
Sultan S Melafekh Co.	Medinah	Sultan S Melafekh Co.	Feeding Crusher	Completed
Core Drilling	Najran	AMAK	HQ Core Drilling	Completed
Underground Drilling	Najran	AMAK	NQ Underground Drilling	Completed
North South Railway project	Jeddah	Al Rashid Contracting Co.	Drilling & Blasting	Completed
Overall Project Villages	Hail	Al Rashid Contracting Co.	Leveling, Punching & Blasting	Completed
Central Services Complex	Abha	Ministry of Municipal & Rural Affair	Drilling & Blasting	Completed
Draft-Channel Holy Mountain	Mina- Makkah	Al Harbi Contracting Co.	Blasting	Completed
Bryman Tanks	Bryman-Jeddah	Saline Water Conversation Corps	Hard Rock Blasting	Completed
Makkah Mega Project	Mina-Makkah	China Railway	Hard Rock Demolition	Completed
Quiza Reservoir	Jeddah	Al Rashid Contracting Co.	Hard Rock Demolition	Completed
Arafat Tank	Jeddah	A.S Al Rashid & Co.	Rock Demolition	Completed
King Khalid University	Jeddah	Ministry of Education	Waterproofing & Thermal works	Completed
Water Transmission System	Jeddah	A.S Al Rashid & Co.	Drilling & Blasting	Completed
Al Barrack Quarries	Jeddah	Al Barrack Crusher Co.	Drilling & Blasting	Completed
S.B.M Quarries	Jeddah	Saudi Building Materials Co. Ltd	Drilling & Blasting	Completed
Makkah Police Station Development	Makkah	Ministry of Interior	Turn Key Extension Building works	Completed
GAC Quarries	Jeddah	General Agencies & Contracting Co.	Drilling & Blasting	Completed
Al Rasheed Quarries	Jeddah	Rashed Al Rashed & Sons Group	Rock Demolition	Completed
Quarries Work	Jeddah	National Project Co. & Ltd	Crusher & Quarries	Completed
Drilling & Blasting works	Makkah	Shamasi Alkar Co.	Drilling & Blasting	Completed

Our Services Coverage in KSA






AL HAYTHAM GENERAL CONTRACTING
FROM EXPLORATION TO MINING



الهيئة للمقاولات العامة
من الإستكشاف إلى التعدين



Tel : +966 12 252 3300
Fax : +966 12 252 3311
P.O. Box : 75579

Address

Head Office : Building No. 22, second floor, Office No. 2,
Prince Muhammad Ibn Saad Ibn Abdul Aziz Road,
Al Qirawan district - Riyadh 13531 - KSA

Branch Office : Al Rashed Building, first floor, Office No. 10,
Al Nakheel district - Jeddah 23241 - KSA

E-mail : info@agcest.com
Website : www.agcest.com

